



Gæði kennslu við ME

Kennslukönnun 22. – 26. mars 2010

Starfshópur um innra mat

Menntaskólinn á Egilsstöðum

Víkuna 22. – 26. mars 2010 mátu nemendur við ME kennslu og kennslutengda þætti í áföngum við ME. Valdir voru tveir fjölmennustu námshópar hvers kennara. Nemendur tóku um 20 mínútur af einni kennslustund til að svara könnuninni. Hún fór fram á þann veg að fulltrúi úr starfshópi um innra mat útbjó kannanirnar í vefþjónustunni SurveyMonkey, útbjó tengla og birti á kennsluvef skólans, www.kennsluvefur.is. Tenglarnir birtust nemendum inni í hverjum áfanga fyrir sig og voru einungis sýnilegir nemendum á meðan á könnuninni stóð.

Föstudaginn 26. mars fengu kennarar senda tengla á niðurstöður sinna námshópa, en miðað var við að a.m.k. 9 nemendur hafi svarað í hverjum hópi.

Niðurstöður kannananna nýtast kennurum til að átta sig betur á hvað vel er gert og hvað má bæta. Þær nýtast einnig stjórnendum skólans, m.a. við starfsmannaviðtöl.

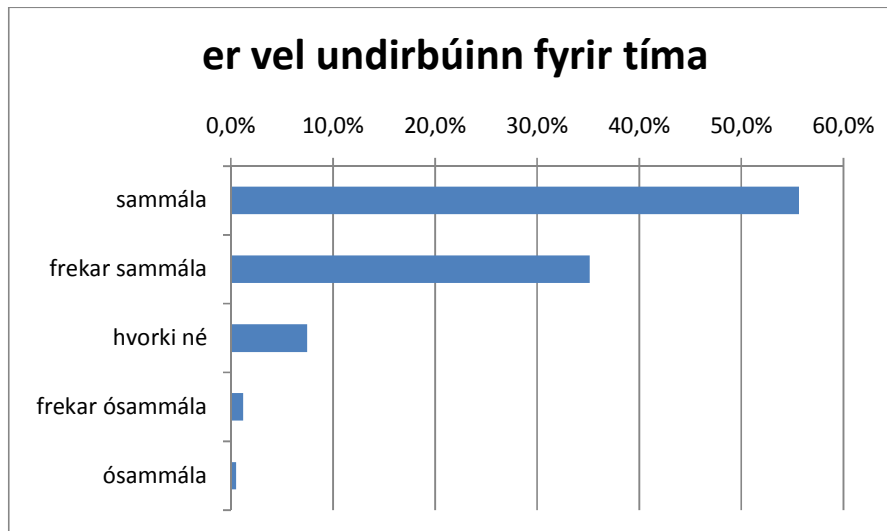
Í meðfylgjandi myndritum er búið að taka saman svörum nemenda í öllum námshópunum. Þessi myndrit nýtast kennurum sem samanburður, svo þeir átta sig betur á hvernig staðan hjá þeim er miðað við heildina. Alls voru 574 svarendur í könnuninni, svo hver nemandi hefur metið rúmlega tvo námshópa. Heildarfjöldi nemenda í þeim námshópum sem könnunin var lögð fyrir var 782 svo svörin var 73,4%

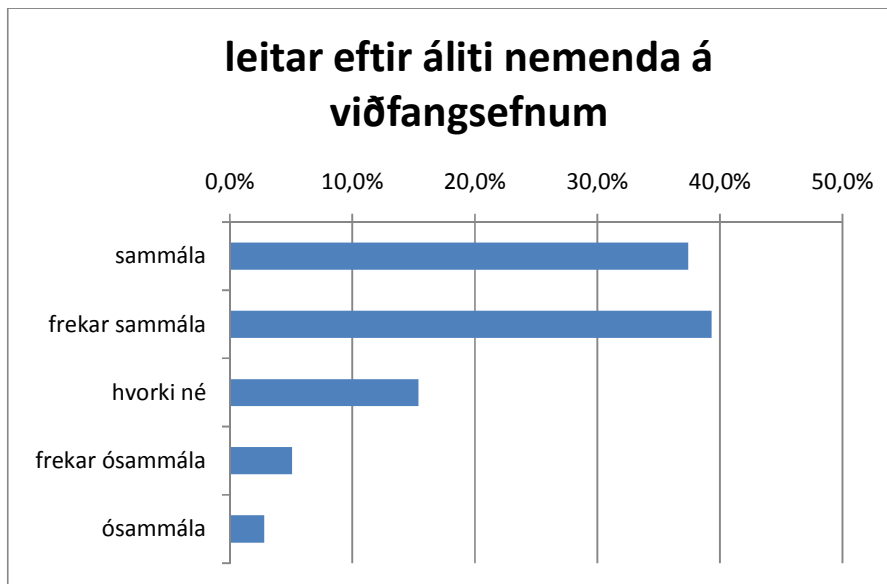
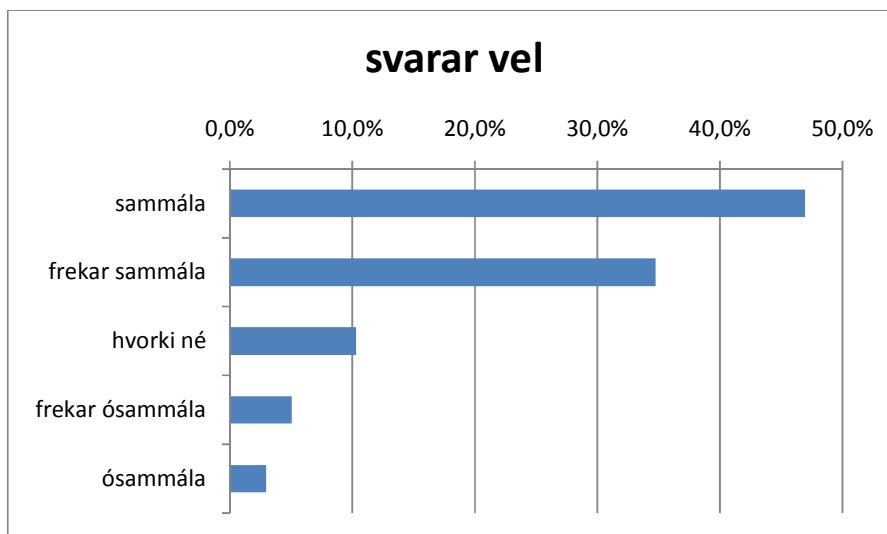
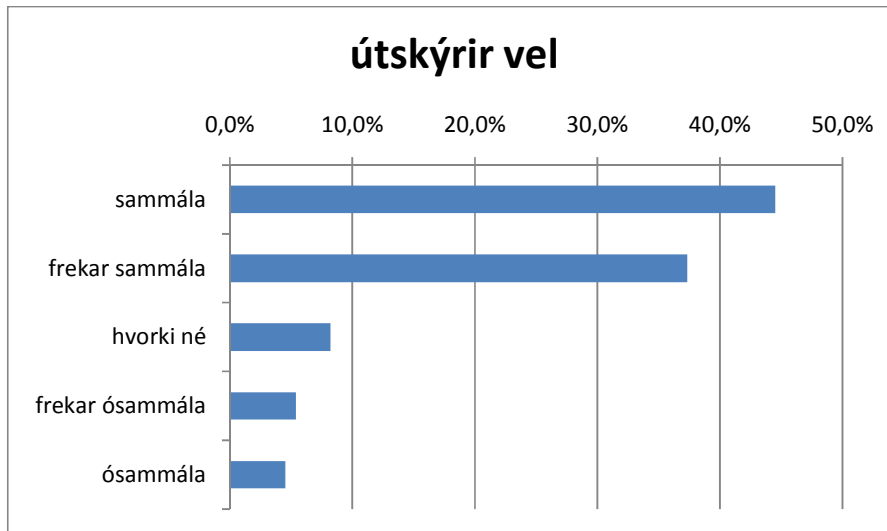
Ritin eru einnig birt á heimasíðu Innra mats við skólann.

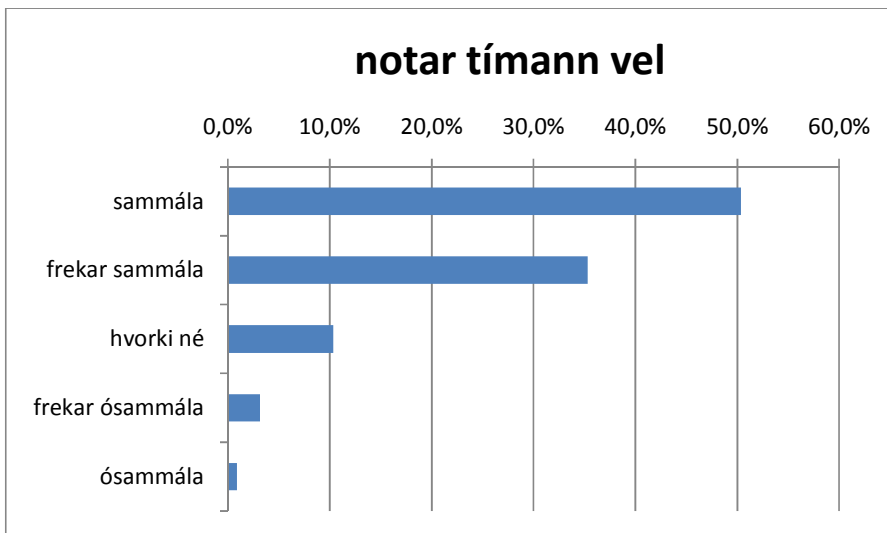
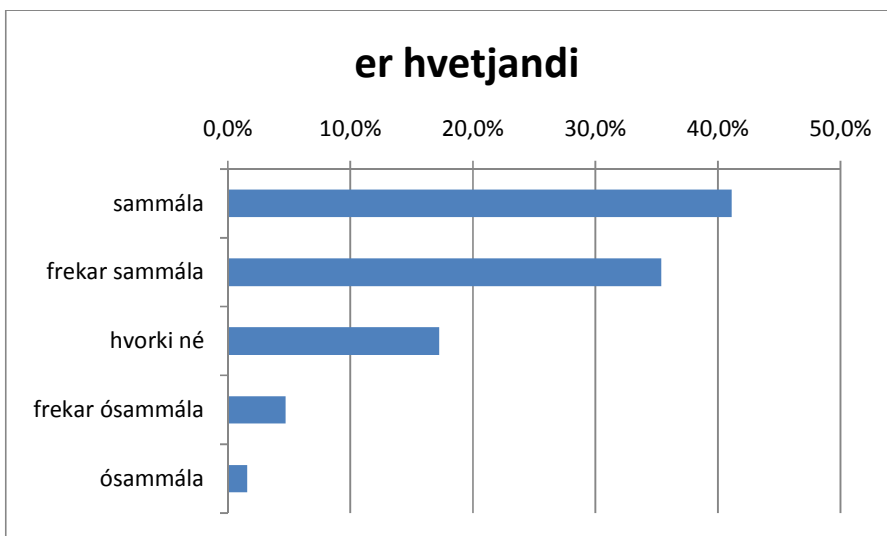
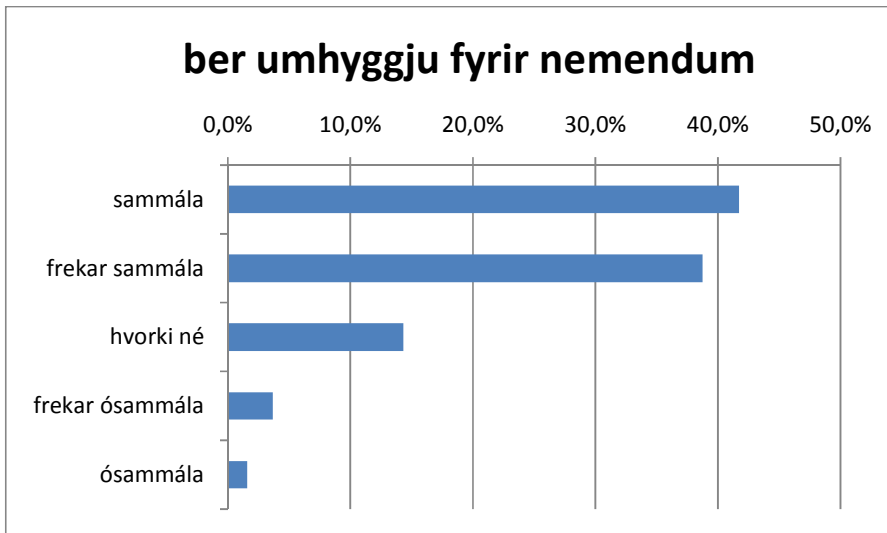
Skýrslan er unnin af Þorbirni Rúnarsyni, áfangastjóra við ME

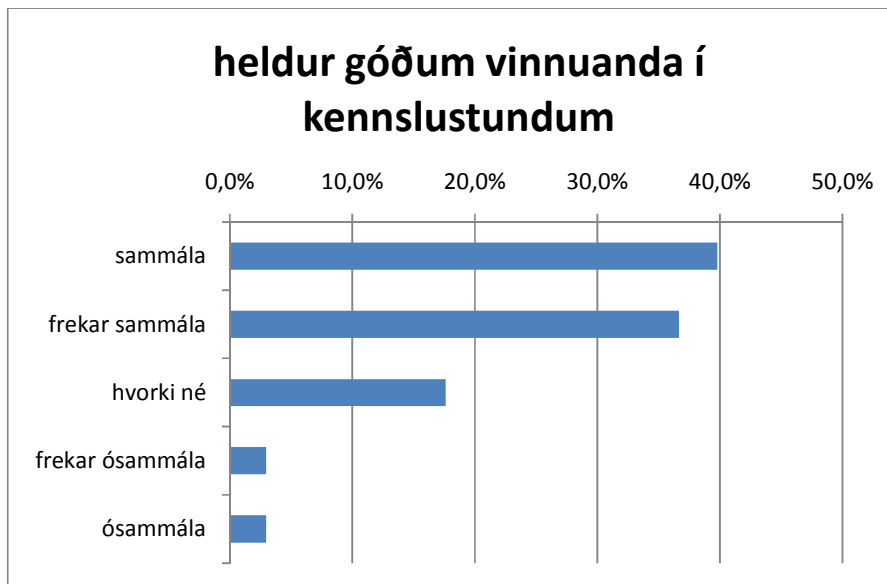
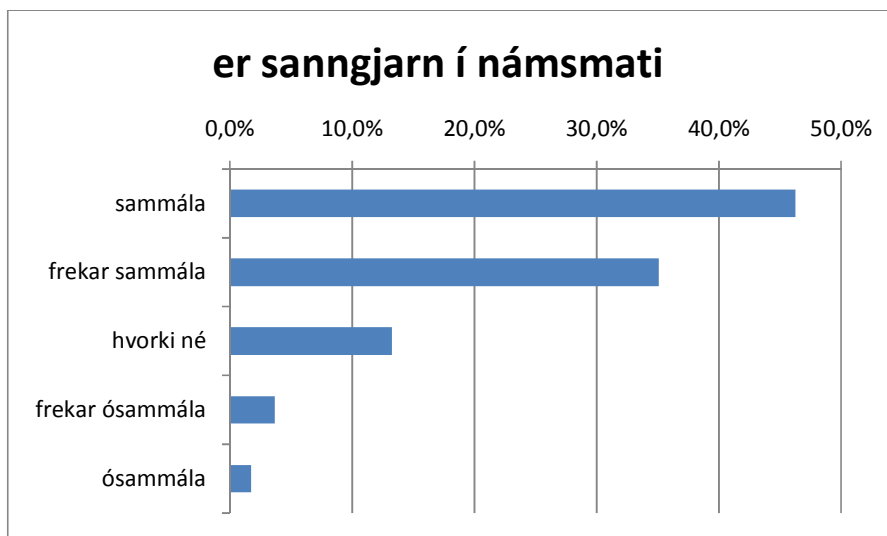
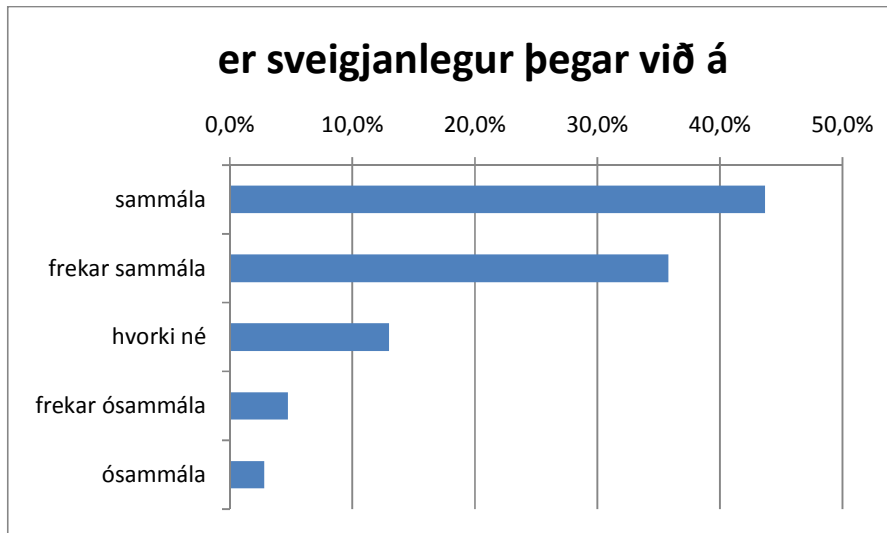
1. hluti: Spurningar um viðmót kennarans, undirbúning, stundvísí ofl.

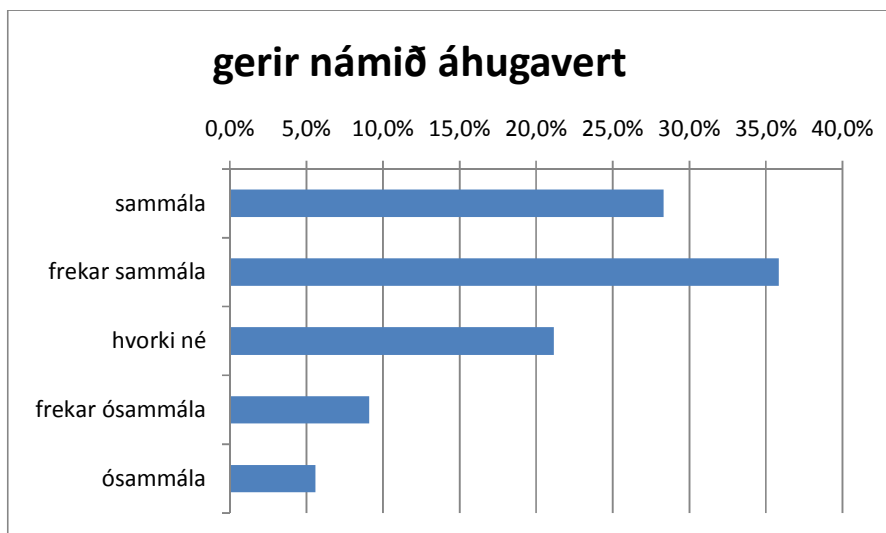
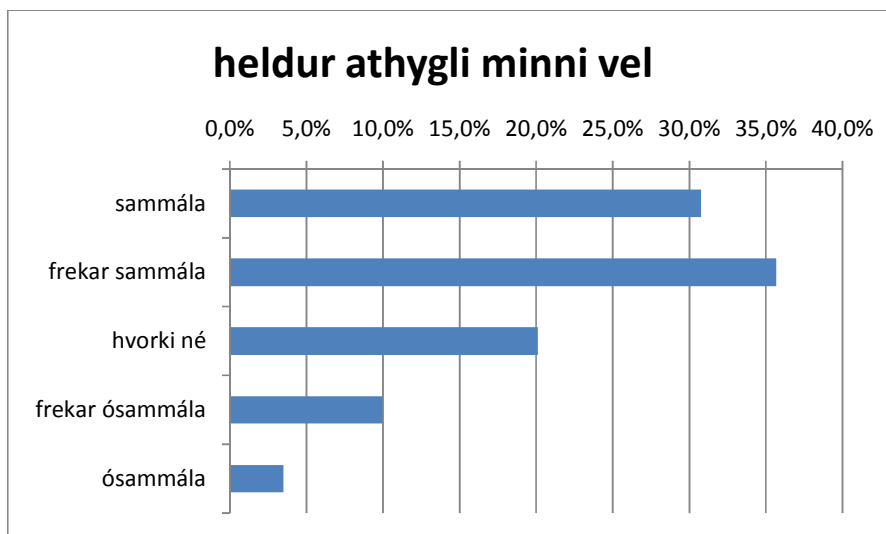
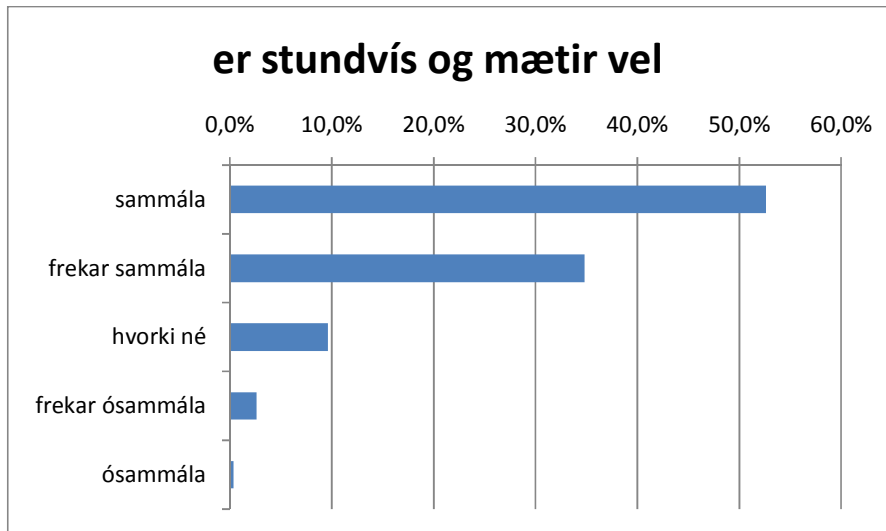
Kennarinn,

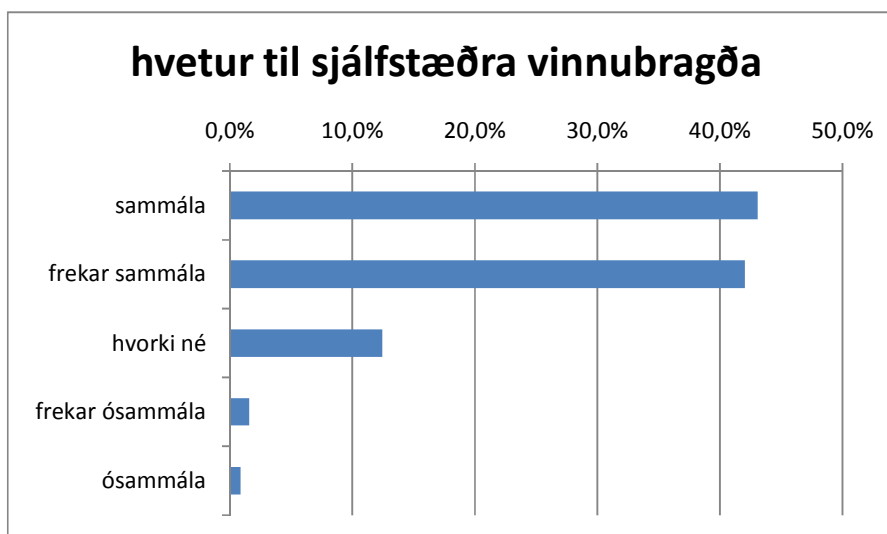
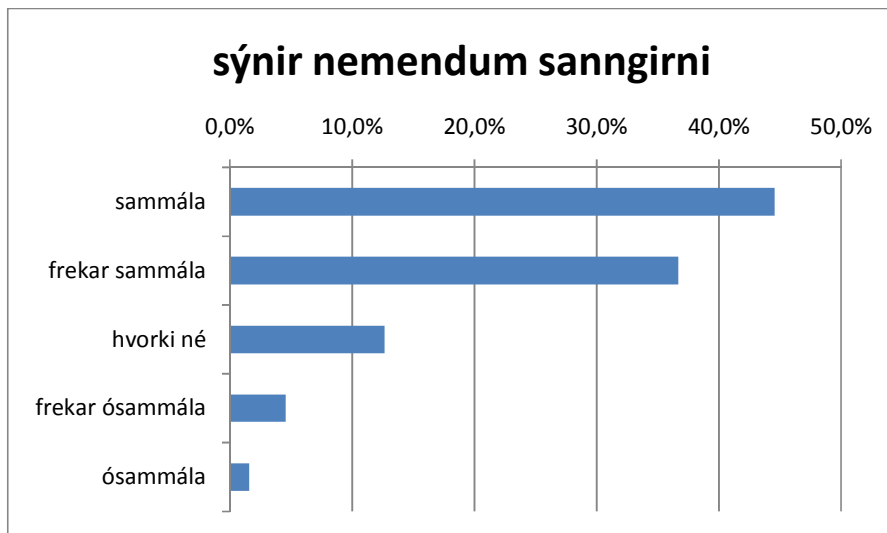
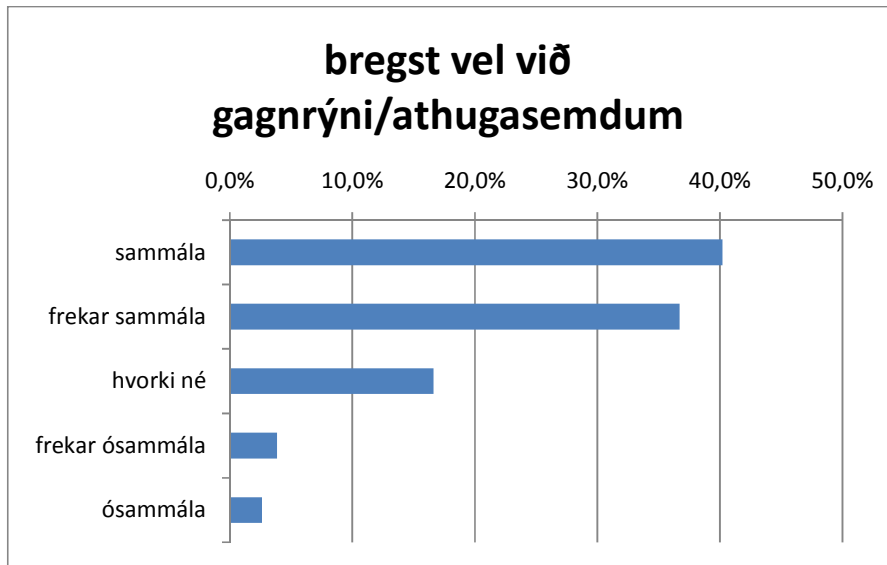


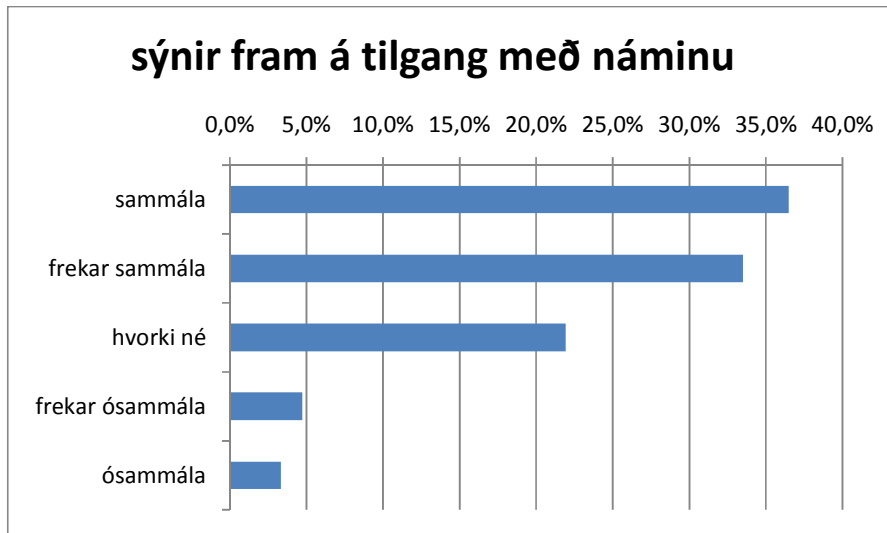




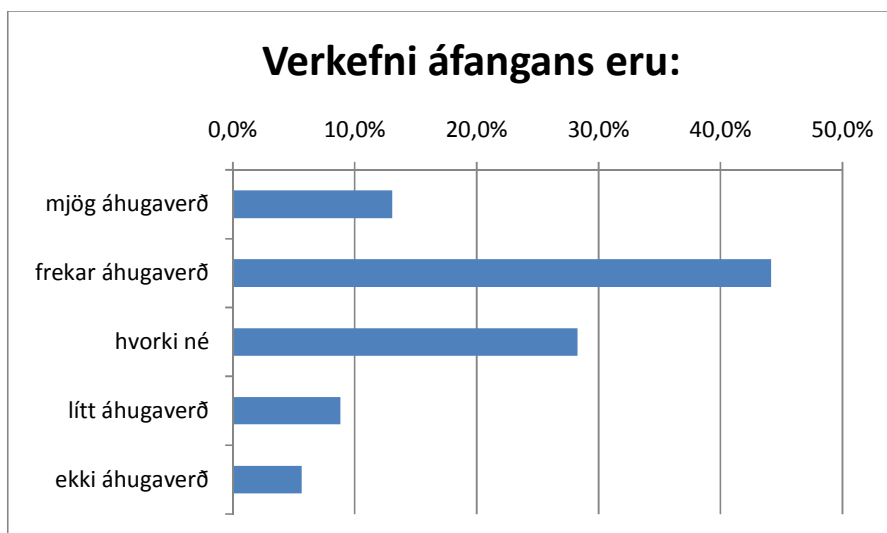
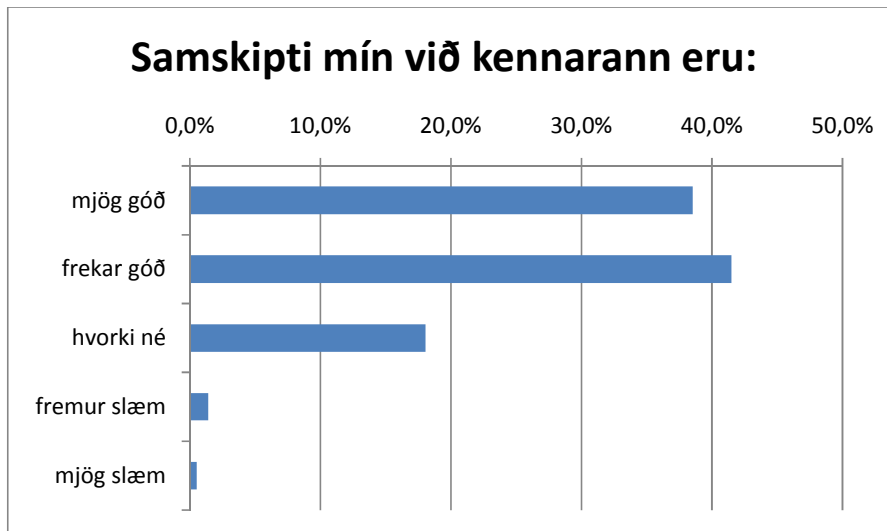


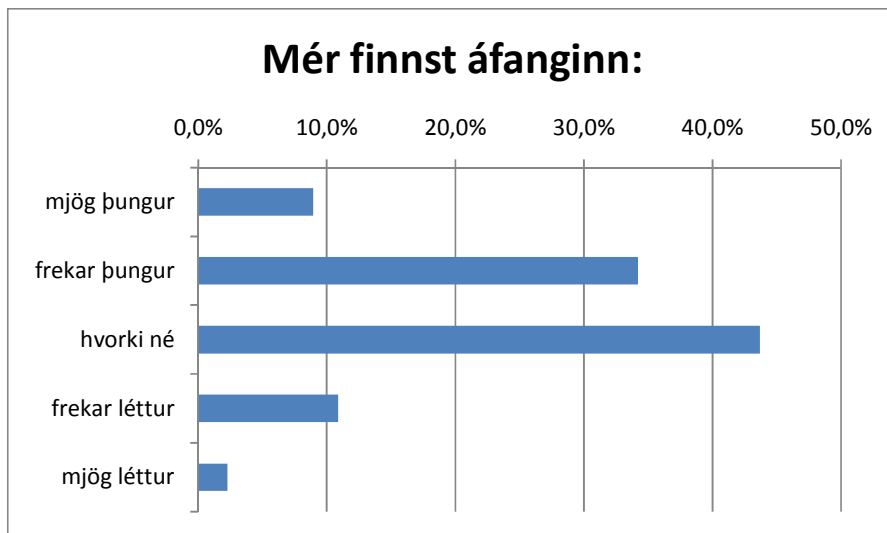
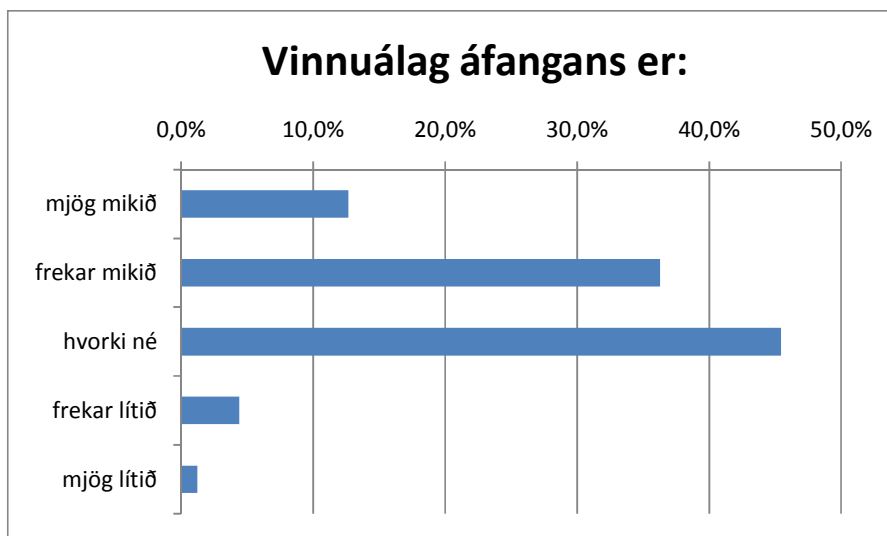
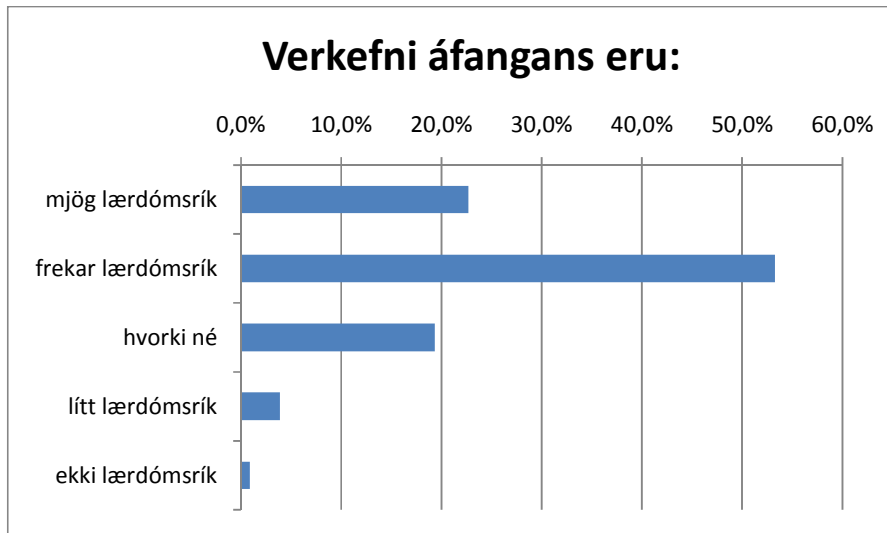


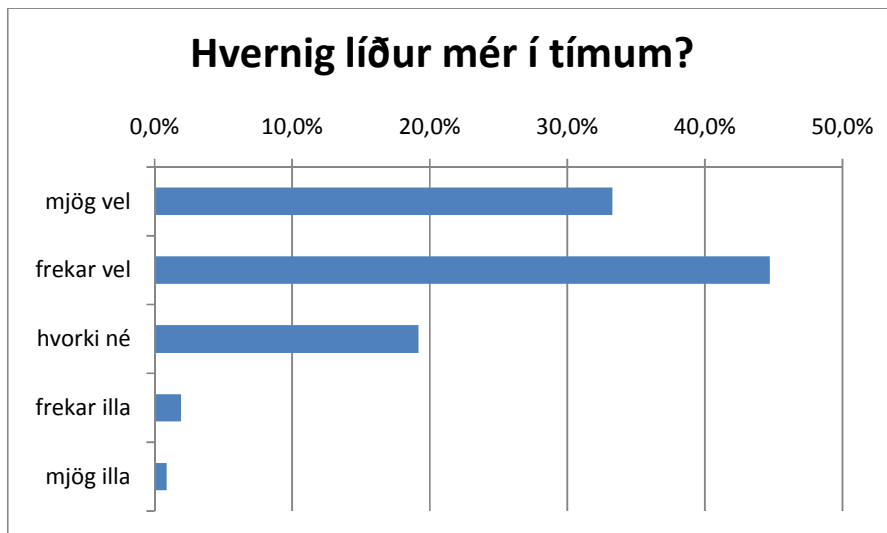
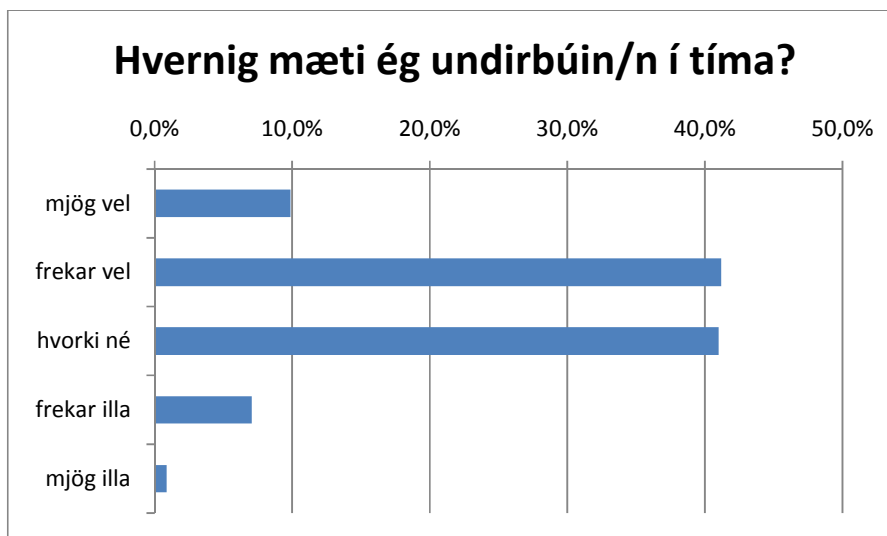
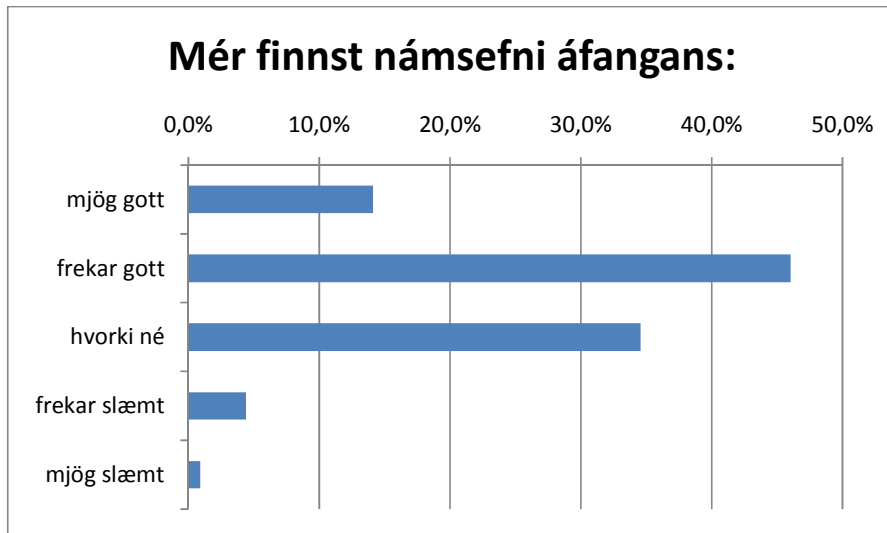


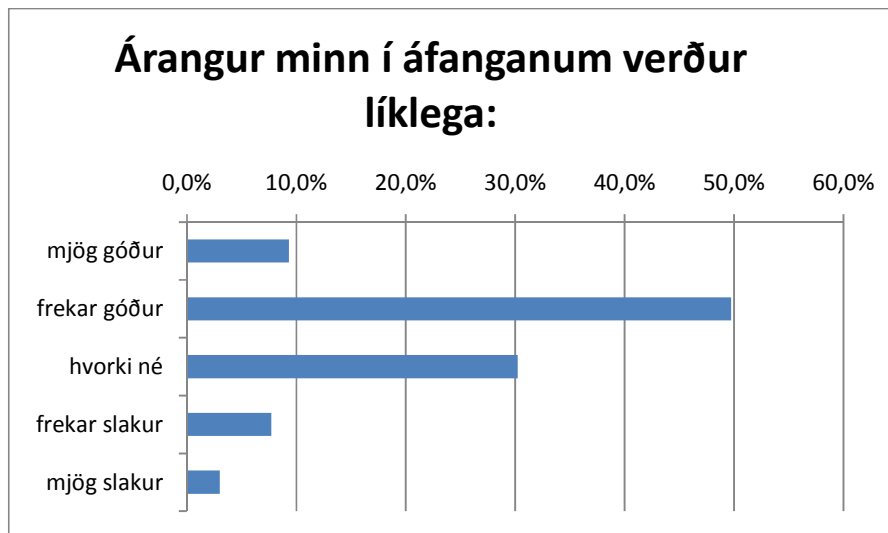


2. hluti: almennt um áfangann, verkefni, námsefni, stöðu nemandans ofl.

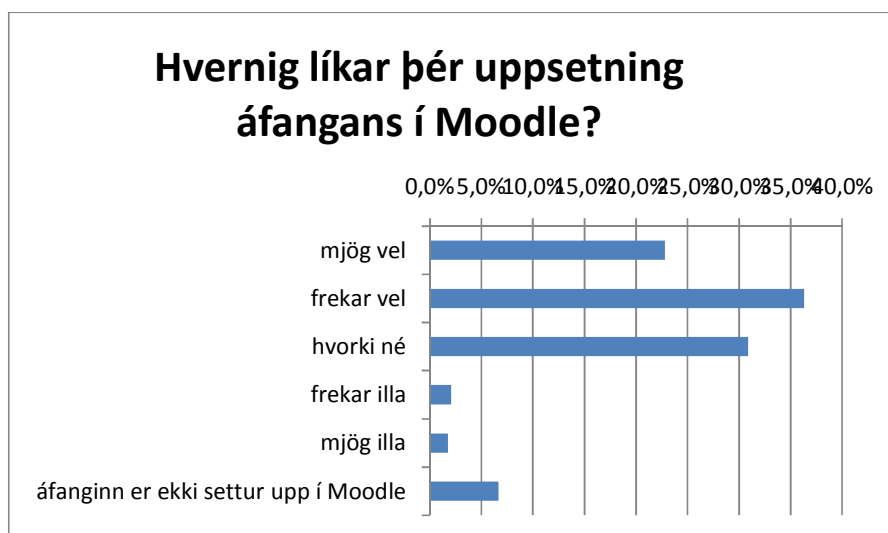
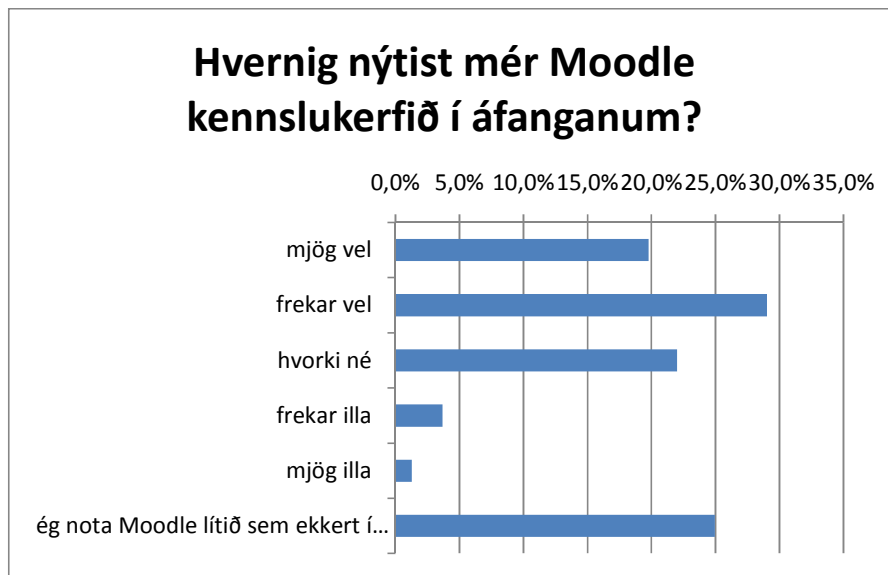




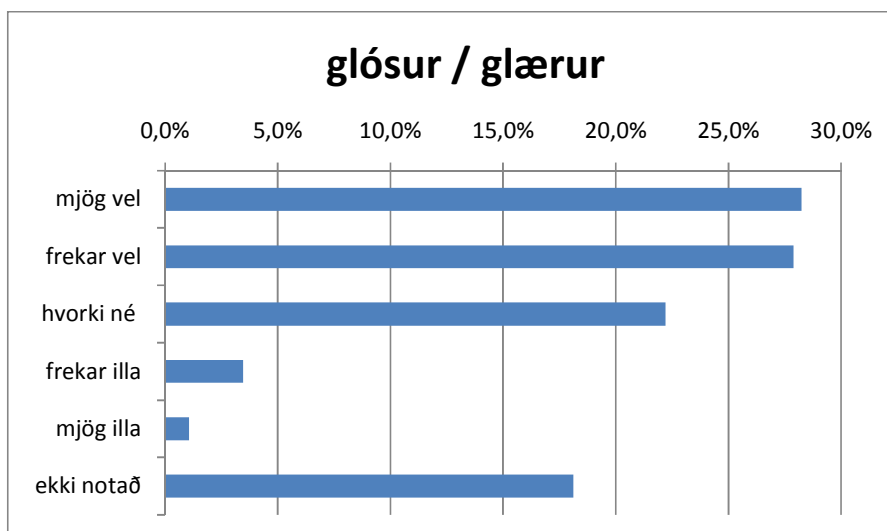
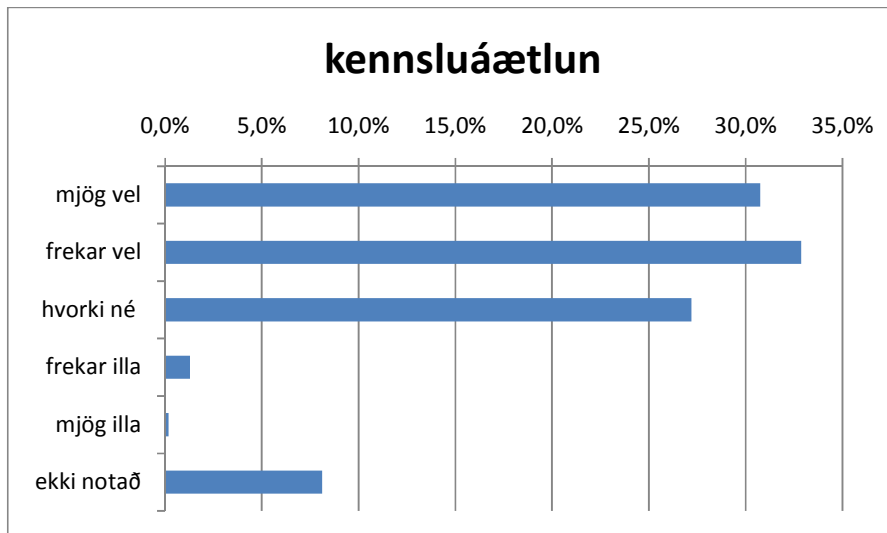
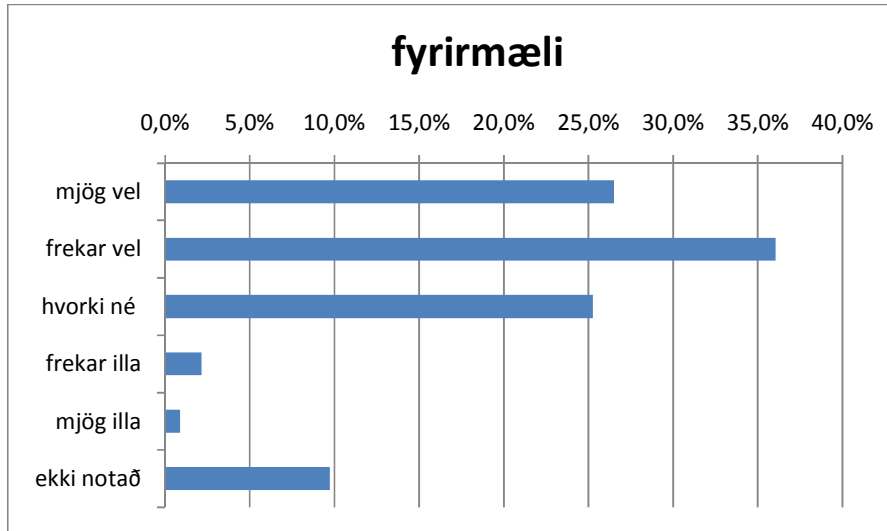


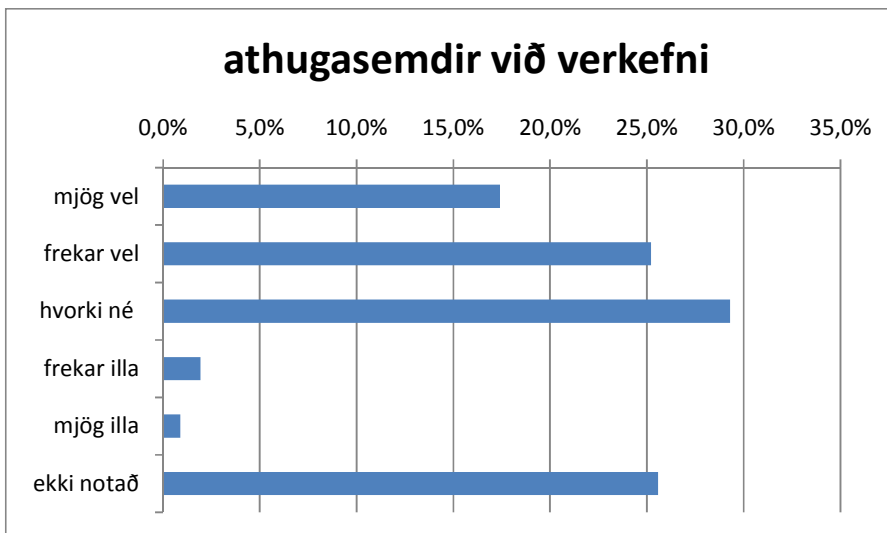
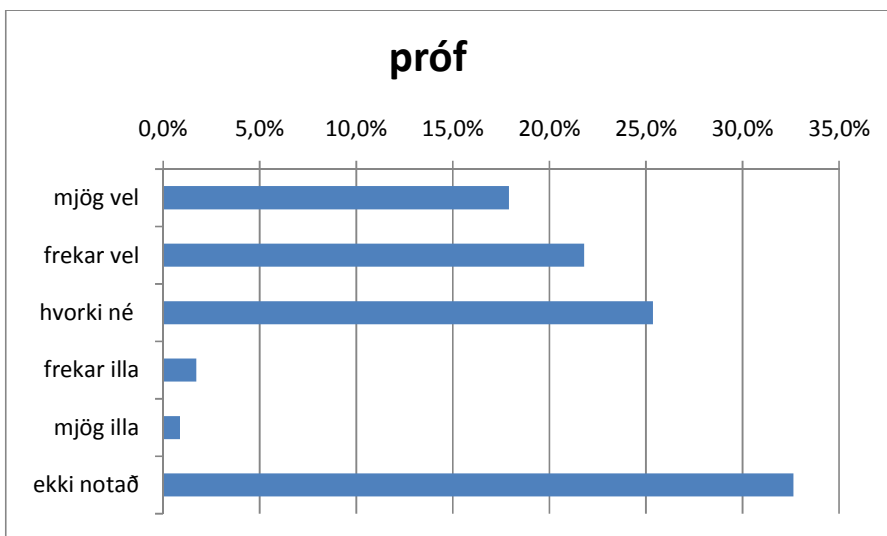
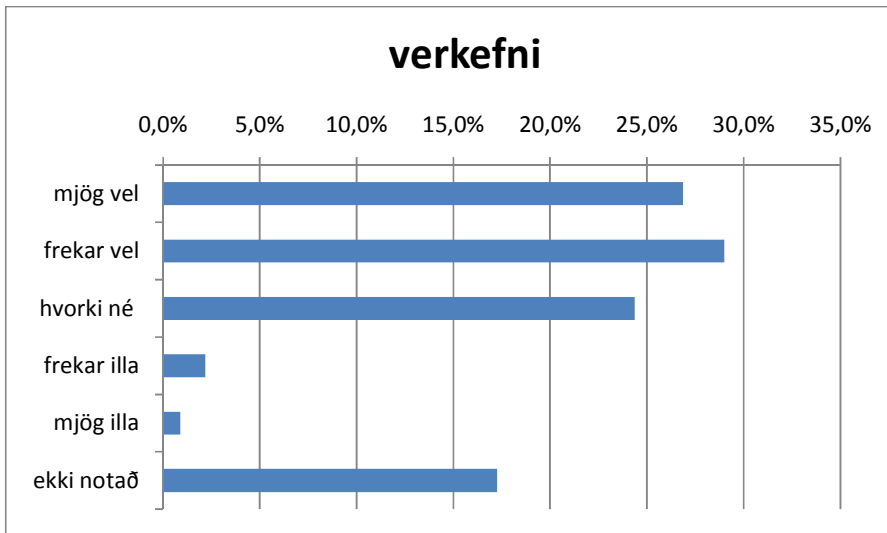


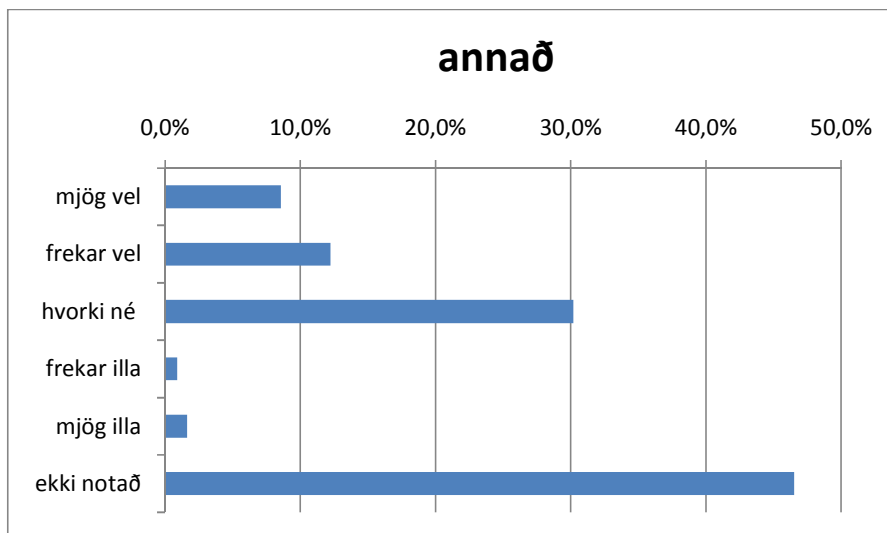
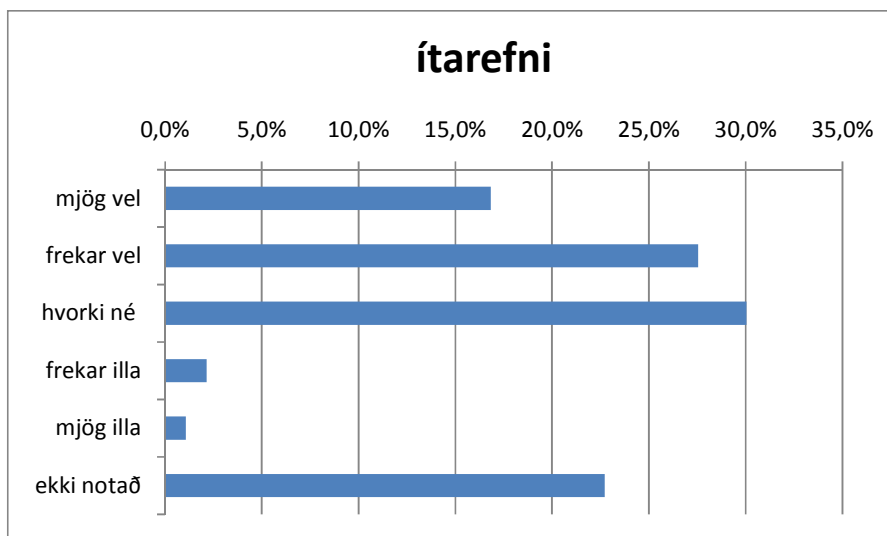
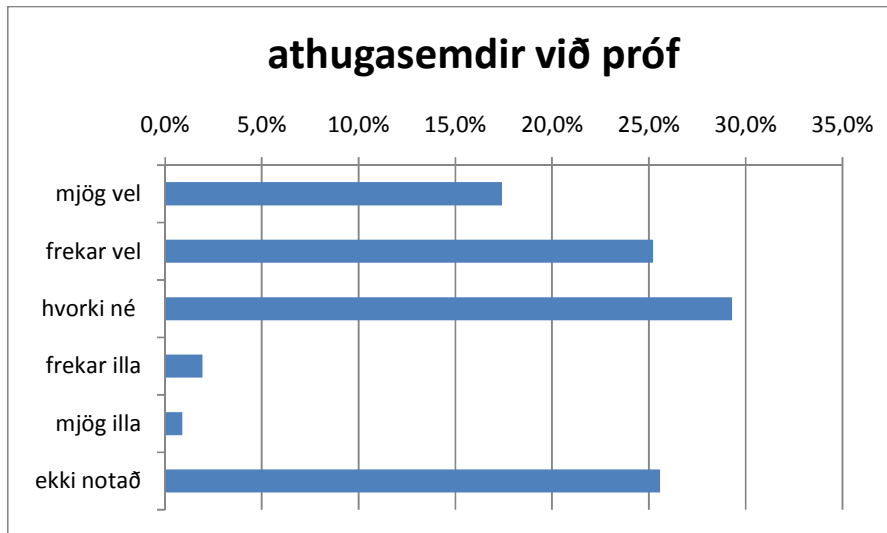
3. hluti, Moodle-kennslukerfið.



Hvernig nýttast þér eftirfarandi Moodle-þættir í áfanganum:







Nemendur voru beðnir að tilgreina þá þætti sem þeir áttu við í síðustu spurningunni. Eftirfarandi svör komu fram:

- ekkert
- ég nota ekki moodle
- ég notaði ekki moodle
- mjög góð í að kenna okkur og sýnir skilning.
- mjög lítið sett á moodle annað en áætlanirnar
- Moodle er aðallega fyrir fjarnemendur í þessum áfanga
- Moodle er aðallega fyrir fjarnemendur í þessum áfanga.
- ofnotkun kensluvefsins
- umræðurnar sem stofnaðar voru dattu uppfyrir vegna þátttökuleysis.
- útskýringar og þess háttar.
- voða lítið notað moodle, fáum allt í hendurnar, en ef eitthvað gleymist er hægt að finna það inná moodle.

1. apríl 2010

Þorbjörn Rúnarsson